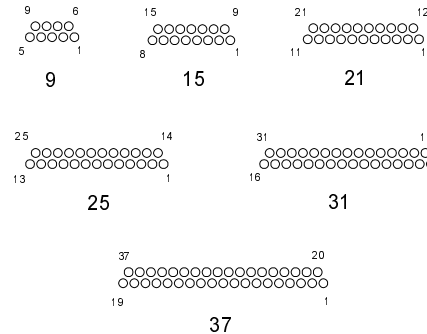
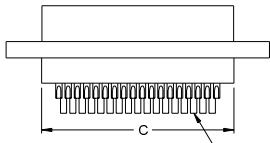
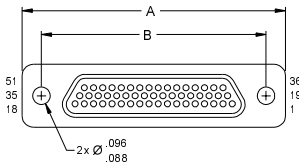


## 1.1 MICRO CONNECTORS / M83513 MICRO D

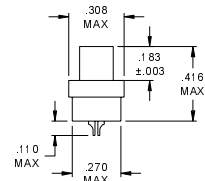
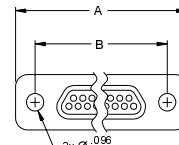
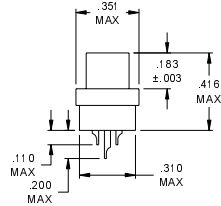
NO. OF CONTACTS	A MAX	B	C MAX
9	.785	.565	.400
15	.935	.715	.550
21	1.085	.865	.700
25	1.185	.965	.800
31	1.335	1.115	.950
37	1.485	1.265	1.100
51	1.435	1.215	1.050
100	2.170	1.800	1.442



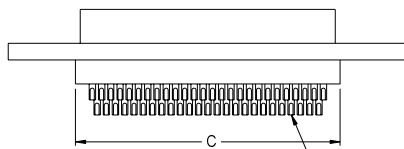
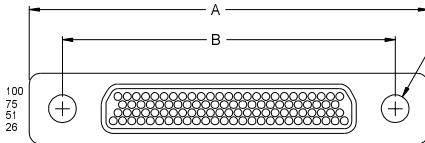
MATING FACE



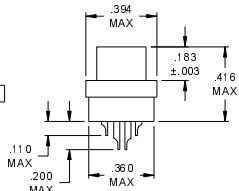
51 CONTACTS



9-37 CONTACTS



100 CONTACTS



CIM 01 - # #

CRISTEK'S P/N EQUIVALENT TO M83513 MIL SPEC.

PLUG, CLASS M, SOLDER CUP PIN CONTACTS

NUMBER OF CONTACTS

A = 9    D = 25    G = 51  
 B = 15    E = 31    H = 100  
 C = 21    F = 37

SHELL FINISH  
 C = CADMIUM  
 N = NICKEL

1. MATERIALS:

SHELL - ALUMINUM PER QQ-A-200/8, QQ-A-250/11, OR QQ-A-591  
 INSULATOR - DIALLYL PHTHALATE PER MIL-M-14, TYPE SDG-F  
 PIN CONTACT - BERYLLIUM COPPER

2. FINISH:

SHELL - CADMIUM PER QQ-P-416, TYPE II, CLASS 3 OVER  
 ELECTROLESS NICKEL PER AMS 2404  
 OR ELECTROLESS NICKEL PER AMS 2404  
 CONTACT - GOLD PER MIL-G-45204, TYPE II, GRADE C,  
 CLASS I OVER NICKEL PER QQ-N-290.

3. SPECIFICATIONS:

CURRENT RATING ----- 3 AMPS MAX  
 TEMPERATURE RATING ----- -55° C TO +125° C  
 INSULATION RESISTANCE ----- 5000 MEGOHMS MIN  
 DWV AT SEA LEVEL ----- 600 VAC  
 DWV AT 70,000 FT ALTITUDE --- 150 VAC  
 CONTACT RESISTANCE ----- 8 MILLIOHMS MAX AT 2.5 AMPS  
 LOW LEVEL CONTACT ----- 10 MILLIOHMS MAX  
 RESISTANCE  
 CONTACT RETENTION ----- 5 lb MINIMUM AXIAL LOAD  
 ENGAGEMENT FORCE ----- 6 oz MAX  
 SEPARATION FORCE ----- 0.5 oz MIN

4. ADDITIONAL INFORMATION:

FOR CROSS-REFERENCING CRISTEK PART NUMBERS TO M83513, SEE CROSS REFERENCE INFORMATION IN THE FRONT OF THIS SECTION. FOR MOUNTING HARDWARE OPTIONS, SEE THE HARDWARE PAGES AT THE END OF THIS SECTION

CRISTEK INTERCONNECTS, INC. www.cristek.com 1301 S. Lewis St. Anaheim, CA 92805 Phone: (714) 618-2000 FAX: (714) 535-4897	TITLE <b>MICROMINIATURE D METAL SHELL                  PLUG, SOLDER CUP</b>	DWG. NO. <b>M83513/01</b>		
	FILENAME <b>ADS-CIM01-1</b>	CODE IDENT N.O. <b>67720</b>	SHT <b>1</b> OF <b>1</b>	REV <b>D</b>
TOLERANCE: .XXX ±.005 .XX ±.01 ANGLE ±1°				