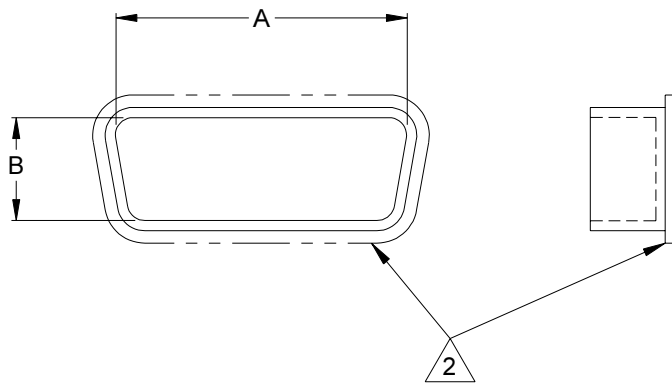


PLUG DUST COVER

PLUG ORDERING INFORMATION

PART NUMBER	SHELL SIZE	A REF	B REF
C90-00022-01	9	.32	.17
C90-00022-02	15	.47	.17
C90-00022-03	21	.62	.17
C90-00022-04	25	.72	.17
C90-00022-05	31	.87	.17
C90-00022-06	37	1.02	.17
C90-00022-07	51	.97	.21
C90-00022-08	69	1.27	.21
C90-00022-09	100	1.79	.25



RECEPTACLE DUST COVER

RECEPTACLE ORDERING INFORMATION

PART NUMBER	SHELL SIZE	A REF	B REF
C90-00023-01	9	.37	.23
C90-00023-02	15	.52	.23
C90-00023-03	21	.67	.23
C90-00023-04	25	.77	.23
C90-00023-05	31	.92	.23
C90-00023-06	37	1.07	.23
C90-00023-07	51	1.02	.28
C90-00023-08	69	1.32	.28
C90-00023-09	100	1.79	.38

1. MATERIAL:  
COVER - POLYETHYLENE

2. LIP AROUND DUST COVER IS OPTIONAL

CRISTEK INTERCONNECTS, INC. www.cristek.com 1301 S. Lewis St. Anaheim, CA 92805 Phone: (714) 618-2000 FAX: (714) 535-4897	TITLE	DWG. NO.		
		MDDC		
		CODE IDENT NO.	SHT	OF
		67720	1	1
				REV
				A
	FILENAME	TOLERANCE: .XXX ±.005 .XX ±.01 ANGLE ±1°		
		ADS-MDDC-1		