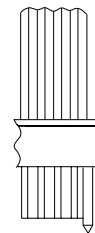
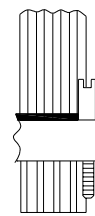
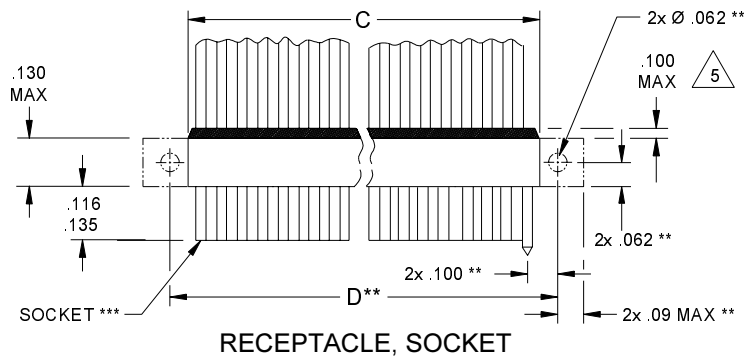


1.4 MICRO CONNECTORS / STRIP

NO. OF POSITIONS	A	B	C MAX	D**
3	.050	-	.135	.335
4	-	.075	.160	.360
5	.100	-	.185	.385
6	-	.125	.210	.410
7	.150	-	.235	.435
8	-	.175	.260	.460
9	.200	-	.285	.485
10	-	.225	.310	.510
11	.250	-	.335	.535
12	-	.275	.360	.560
13	.300	-	.385	.585
14	-	.325	.410	.610
15	.350	-	.435	.635

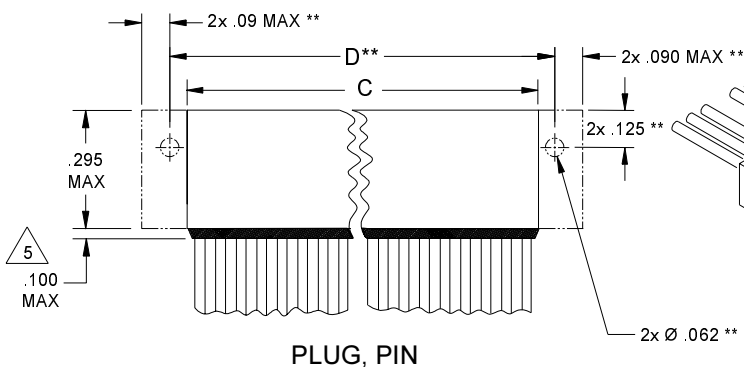
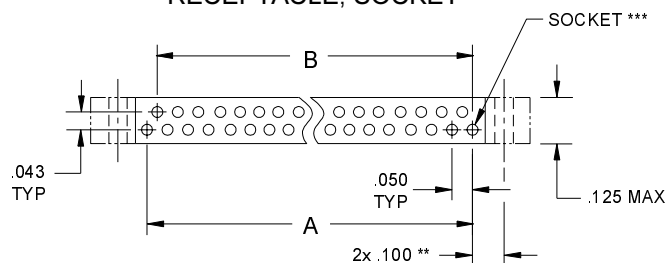
NO. OF POSITIONS	A	B	C MAX	D**
16	-	.375	.460	.660
17	.400	-	.485	.685
18	-	.425	.510	.710
19	.450	-	.535	.735
20	-	.475	.560	.760
21	.500	-	.585	.785
22	-	.525	.610	.810
23	.550	-	.635	.835
24	-	.575	.660	.860
25	.600	-	.685	.885
26	-	.625	.710	.910
27	.650	-	.735	.935
28	-	.675	.760	.960

NO. OF POSITIONS	A	B	C MAX	D**
29	.700	-	.785	.985
30	-	.725	.810	1.010
31	.750	-	.835	1.035
32	-	.775	.860	1.060
33	.800	-	.885	1.085
34	-	.825	.910	1.110
35	.850	-	.935	1.135
36	-	.875	.960	1.160
37	.900	-	.985	1.185
38	-	.925	1.010	1.210
39	.950	-	1.035	1.235
40	-	.975	1.060	1.260



COUPLING SCREW ON EACH END (CAN HAVE A SPECIAL LOCATION BY CUSTOMER REQUIREMENTS)

GUIDE PIN AVAILABLE ON BOTH ENDS NEXT TO CONTACT #1, OR IN A SPECIALLY ORDERED LOCATION



CRISTEK INTERCONNECTS, INC.
 www.cristek.com
 1301 S. Lewis St.
 Anaheim, CA 92805
 Phone: (714) 618-2000
 FAX: (714) 535-4897

TITLE
MICRO STRIP DUAL ROW

FILENAME
ADS-CDS-1

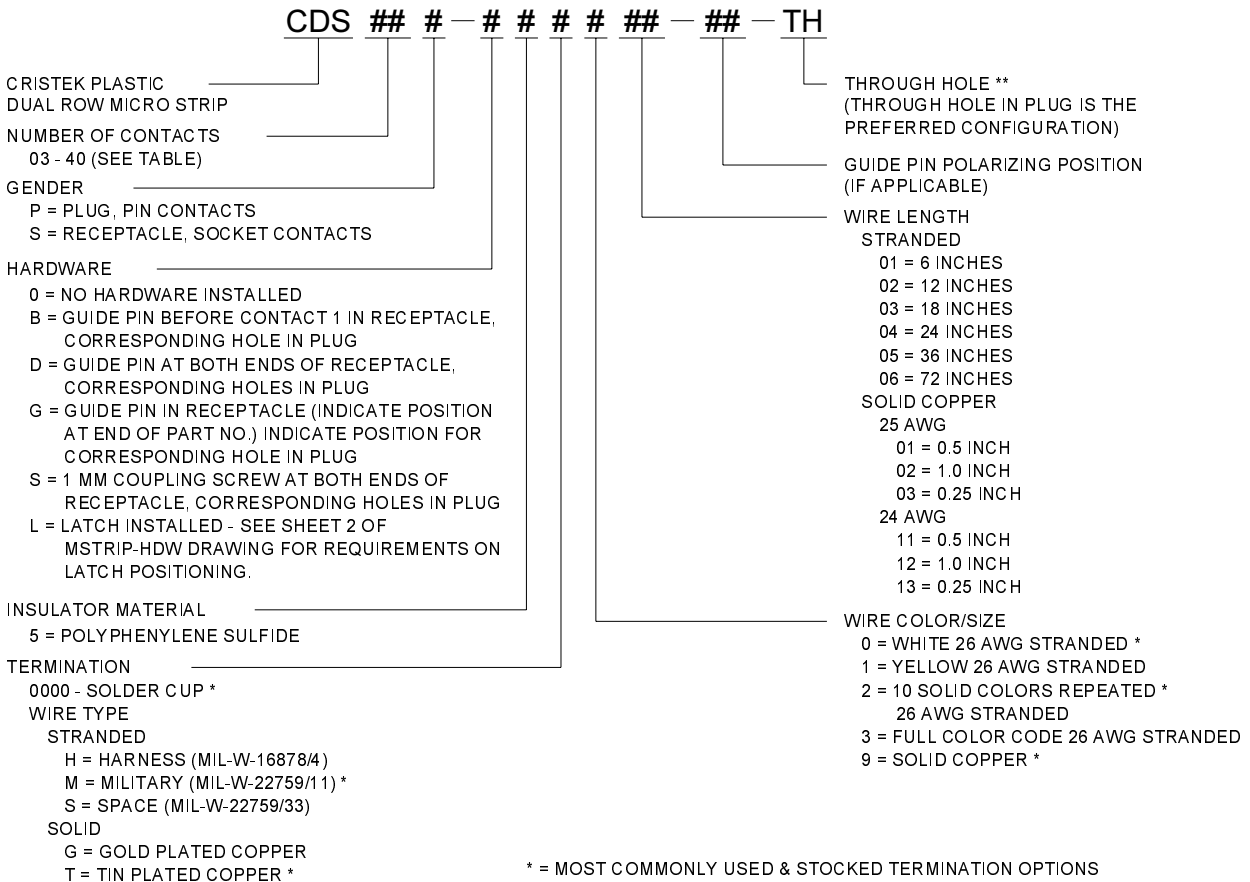
DWG. NO.
CDS

CODE IDENT NO. 67720	SHT 1 OF 2	REV D
--------------------------------	--------------------------	-----------------

TOLERANCE: .XXX ±.005 .XX ±.01 ANGLE ±1°

THINGS TO KNOW ABOUT MICRO STRIPS

- FOR ORDERING PURPOSES SPECIFY ONLY THE NUMBER OF CONTACTS NEEDED, DO NOT INCLUDE POSITIONS FOR HARDWARE.
- TO CALCULATE DIMENSIONS, ADD ONE CONTACT POSITION FOR EACH GUIDE PIN/SCREW/LATCH/OPENING REQUIRED.
- IF HARDWARE IS ORDERED, IT IS INSTALLED IN THE RECEPTACLE. BE SURE TO ORDER PLUGS TO ACCEPT HARDWARE.
- HARDWARE CAN BE MODIFIED, COMBINED OR POSITIONED TO CONFORM TO CUSTOMER SPECIFICATIONS. PLEASE CONTACT CRISTEK FOR FURTHER INFORMATION.
- END-ON-END STACKING APPLICATIONS ARE ALSO AVAILABLE. PLEASE CONTACT CRISTEK FOR DETAILS.
- STRIPS WITH OVER 40 CONTACTS MAY BE DIFFICULT TO MATE AND DEMATE AND TEND TO BECOME FRAGILE. CONTACT CRISTEK FOR APPLICATION ASSISTANCE



* = MOST COMMONLY USED & STOCKED TERMINATION OPTIONS
 ** = DIMENSIONS / INFORMATION FOR THROUGH HOLE MOUNTING OPTION
 *** = SEE SHEET 2 OF MSTRIP-HDW FOR LOCATION OF CONTACT 1.

1. MATERIALS:

INSULATOR - POLYPHENYLENE PER MIL-M-24519
 TYPE GST-40F
 PIN CONTACT - BERYLLIUM COPPER
 SOCKET CONTACT - COPPER ALLOY

2. FINISH:

CONTACT - GOLD PER MIL-G-45204, TYPE II, GRADE C
 CLASS I OVER NICKEL PER QQ-N-290.

3. SPECIFICATIONS:

CURRENT RATING 3 AMPS MAX
 TEMPERATURE RATING -55° C TO +125° C
 INSULATION RESISTANCE 5000 MEGOHMS MIN
 DWV AT SEA LEVEL 600 VAC
 DWV AT 70,000 FT ALTITUDE 150 VAC
 CONTACT RESISTANCE 8 MILLIOHMS MAX AT 2.5 AMPS
 LOW LEVEL CONTACT 10 MILLIOHMS MAX
 RESISTANCE
 CONTACT RETENTION 5 lb MINIMUM AXIAL LOAD
 ENGAGEMENT FORCE 6 oz MAX
 SEPARATION FORCE 0.5 oz MIN

4. ADDITIONAL INFORMATION:

DESIGN AND PERFORMANCE IN GENERAL ACCORDANCE WITH M83513
 SURFACE MOUNT AND THRU HOLE VERSIONS ALSO AVAILABLE. CONTACT CRISTEK FOR OTHER CONFIGURATIONS.



STANDARD HEIGHT OF EPOXY. SOME SIZES AND APPLICATIONS MAY REQUIRE ADDITIONAL STRAIN RELIEF. CONTACT CRISTEK FOR DETAILS.

CRISTEK INTERCONNECTS, INC. www.cristek.com 1301 S. Lewis St. Anaheim, CA 92805 Phone: (714) 618-2000 FAX: (714) 535-4897	TITLE	MICRO STRIP DUAL ROW			DWG. NO.	CDS				
	FILENAME	ADS-CDS-2	CODE IDENT NO.	67720	SHT	2	OF	2	REV	D
					TOLERANCE: .XXX ±.005 .XX ±.01 ANGLE ±1°					