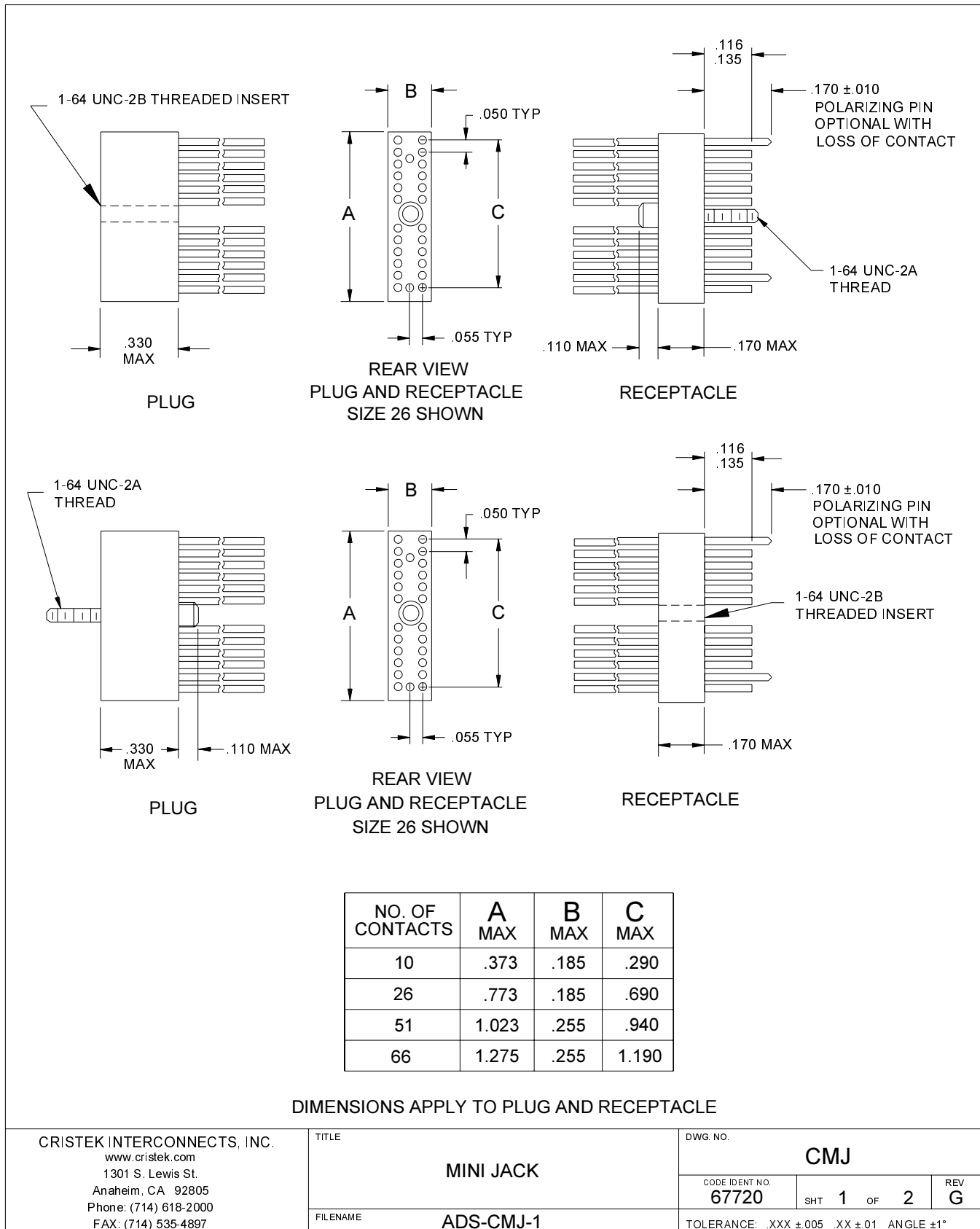
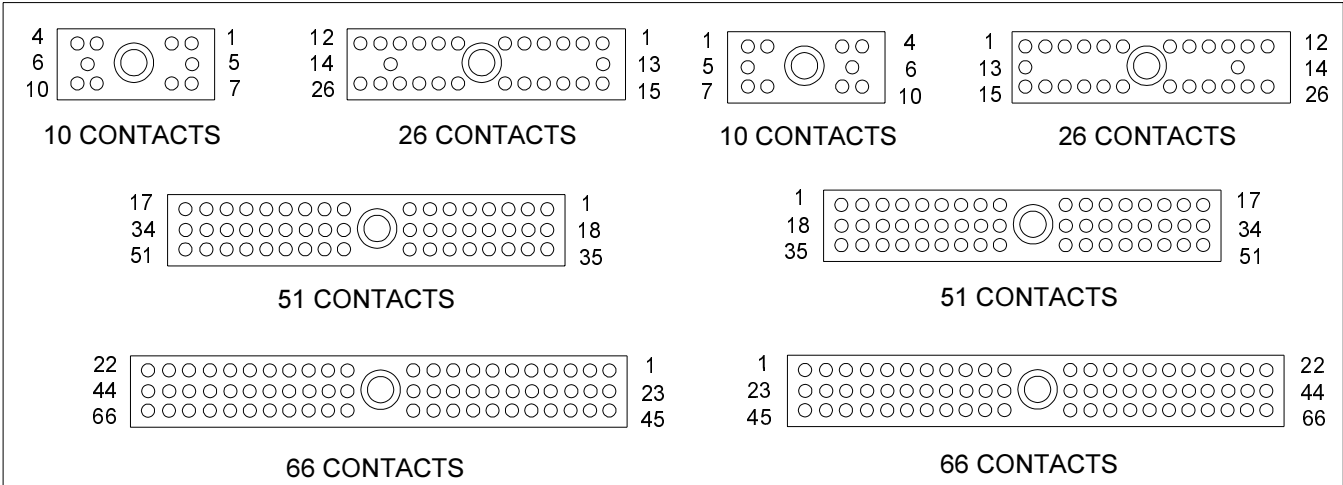


1.5 MICRO CONNECTORS / MISCELLANEOUS DESIGNS





MATING VIEW OF PLUG

MATING VIEW OF RECEPTACLE

CMJ - ## # - # # # # ##

<p>CRISTEK MINI-JACK</p> <p>NUMBER OF CONTACTS 10 51 26 66</p> <p>GENDER P = PLUG, PIN CONTACTS S = RECEPTACLE, SOCKET CONTACTS</p> <p>HARDWARE FACTORY INSTALLED (NON-REMOVABLE) T = THREADED INSERT (STD IN PLUG) L = LOW PROFILE HEX DRIVE JACKSCREW (STANDARD IN RECEPTACLE)</p> <p>INSULATOR MATERIAL 2 = DIALLYL PHTHALATE 5 = POLYPHENYLENE SULFIDE *</p> <p>TERMINATION WIRE TYPE STRANDED H = HARNESS (MIL-W-16878/4) M = MILITARY (MIL-W-22759/11) * S = SPACE (MIL-W-22759/33) SOLID G = GOLD PLATED COPPER T = TIN PLATED COPPER *</p>	<p>WIRE LENGTH STRANDED 01 = 6 INCHES 02 = 12 INCHES 03 = 18 INCHES 04 = 24 INCHES 05 = 36 INCHES 06 = 72 INCHES SOLID 25 AWG 01 = 0.5 INCHES 02 = 1.0 INCHES 03 = 0.25 INCHES 24 AWG 11 = 0.5 INCHES 12 = 1.0 INCHES 13 = 0.25 INCHES</p> <p>WIRE COLOR/SIZE 0 = WHITE 26 AWG STRANDED * 1 = YELLOW 26 AWG STRANDED 2 = 10 SOLID COLORS REPEATED * 26 AWG STRANDED 3 = FULL COLOR CODE 26 AWG STRANDED 9 = SOLID COPPER</p>
--	--

* = MOST COMMONLY USED & STOCKED WIRE TYPE AND HARDWARE OPTIONS

1. MATERIALS:

INSULATOR - DIALLYL PHTHALATE PER MIL-M-14 (OR) POLYPHENYLENE SULFIDE, TYPE GST-40F, IN ACCORDANCE WITH MIL-M-24519 OR EQUIVALENT.
PIN CONTACT - BERYLLIUM COPPER
SOCKET CONTACT - COPPER ALLOY
HARDWARE - STAINLESS STEEL

2. FINISH:

HARDWARE - PASSIVATE PER QQ-P-35
CONTACT - GOLD PER MIL-G-45204, TYPE II, GRADE C, CLASS I OVER NICKEL PER QQ-N-290.

3. SPECIFICATIONS:

CURRENT RATING ----- 3 AMPS MAX
TEMPERATURE RATING ----- -55° C TO +125° C
INSULATION RESISTANCE ----- 5000 MEGOHMS MIN DWV AT SEA LEVEL ----- 600 VAC
DWV AT 70,000 FT ALTITUDE --- 150 VAC
CONTACT RESISTANCE ----- 8 MILLIOHMS MAX AT 2.5 AMPS
LOW LEVEL CONTACT ----- 10 MILLIOHMS MAX RESISTANCE
CONTACT RETENTION ----- 5 lb MINIMUM AXIAL LOAD
ENGAGEMENT FORCE ----- 6 oz MAX
SEPARATION FORCE ----- 0.5 oz MIN

4. ADDITIONAL INFORMATION:

DESIGN AND PERFORMANCE IN GENERAL ACCORDANCE WITH M83513 WHERE APPLICABLE.

<p>CRISTEK INTERCONNECTS, INC. www.cristek.com 1301 S. Lewis St. Anaheim, CA 92805 Phone: (714) 618-2000 FAX: (714) 535-4897</p>	<p>TITLE</p> <h3>MINI JACK</h3>	<p>DWG. NO.</p> <h2>CMJ</h2>		
	<p>FILENAME</p> <h3>ADS-CMJ-2</h3>	<p>CODE IDENT NO.</p> <h3>67720</h3>	<p>SHT</p> <h3>2</h3>	<p>OF</p> <h3>2</h3>
		<p>TOLERANCE: .XXX ±.005 .XX ±.01 ANGLE ±1°</p>		