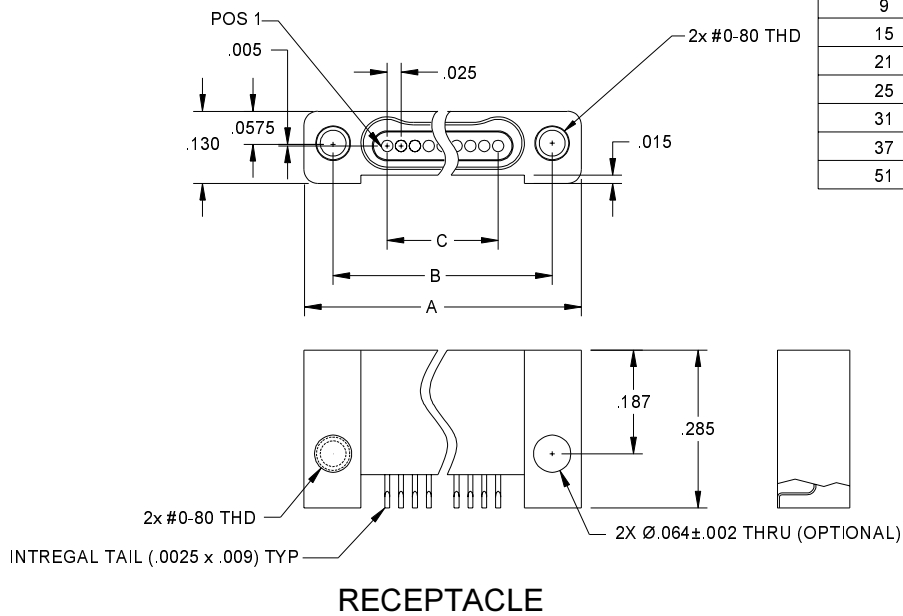
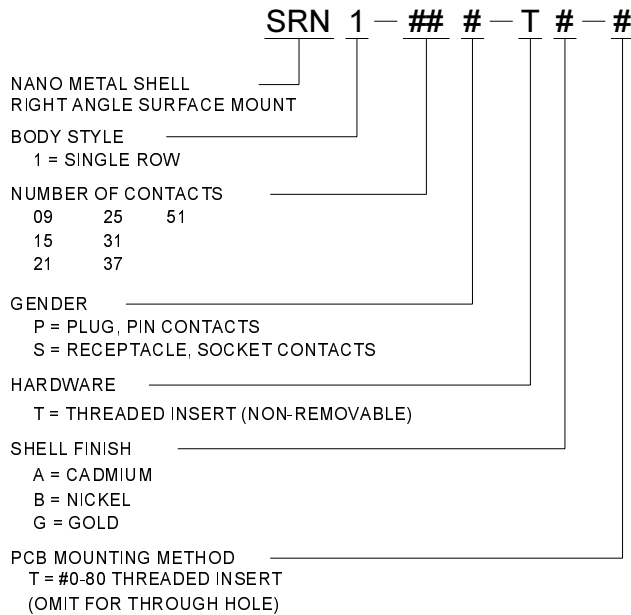


NO. OF CONTACTS	A	B	C MAX
9	.500	.395	.200
15	.650	.545	.350
21	.800	.695	.500
25	.900	.795	.600
31	1.050	.945	.750
37	1.200	1.095	.900
51	1.550	1.445	1.250



(FOR PLUG AND RECEPTACLE PCB CONTACT FOOTPRINTS, SEE SHEETS 3 AND 4)

CRISTEK INTERCONNECTS, INC. www.cristek.com 1301 S. Lewis St. Anaheim, CA 92805 Phone: (714) 618-2000 FAX: (714) 535-4897	TITLE	NANO METAL SHELL SINGLE ROW RIGHT ANGLE SURFACE MOUNT			DWG. NO.	SRN1	
	FILENAME	ADS-SRN1-1	CODE IDENT NO.	67720	SHT	1 OF 4	REV
			TOLERANCE: .XXX ±.005 .XX ±.01 ANGLE ±1°				



**1. MATERIALS:**

SHELL - ALUMINUM PER QQ-A-200/8, QQ-A-250/11, OR QQ-A-591  
INSULATOR - LIQUID CRYSTAL POLYMER OR POLYPHENYLENE  
SULFIDE PER MIL-M-24519  
CONTACT - BERYLLIUM COPPER

**2. FINISH:**

SHELL - CADMIUM PER QQ-P-416, TYPE II, CLASS 3 OVER  
ELECTROLESS NICKEL PER AMS 2404  
OR ELECTROLESS NICKEL PER AMS 2404.  
CONTACT - GOLD PER MIL-G-45204, TYPE II, GRADE C,  
CLASS I OVER NICKEL PER QQ-N-290.

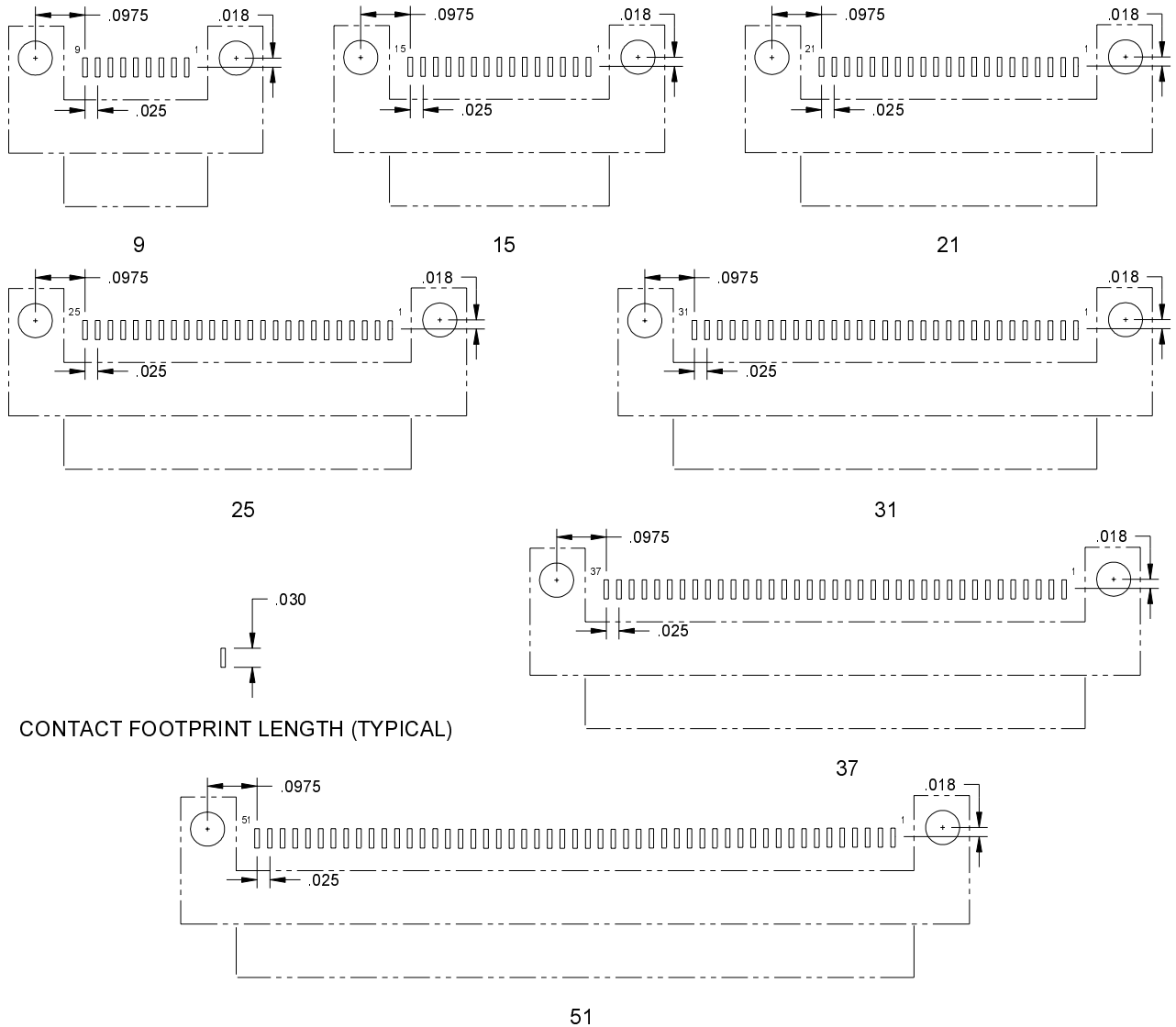
**3. SPECIFICATIONS:**

CURRENT RATING ..... 1 AMP MAX  
TEMPERATURE RATING ..... -55° C TO +125° C  
INSULATION RESISTANCE ..... 5000 MEGOHMS  
DWV AT SEA LEVEL ..... 250 VAC  
DWV AT 70,000 FT ALTITUDE --- 100 VAC  
CONTACT RESISTANCE ..... 30 mV DROP @ 1 a, 10 mA  
(BASED ON SOLID WIRE)  
CONTACT RETENTION ..... 2 LBS AXIAL LOAD  
ENGAGEMENT FORCE ..... 5 oz MAX  
SEPARATION FORCE ..... 0.4 oz MIN

**4. ADDITIONAL INFORMATION:**

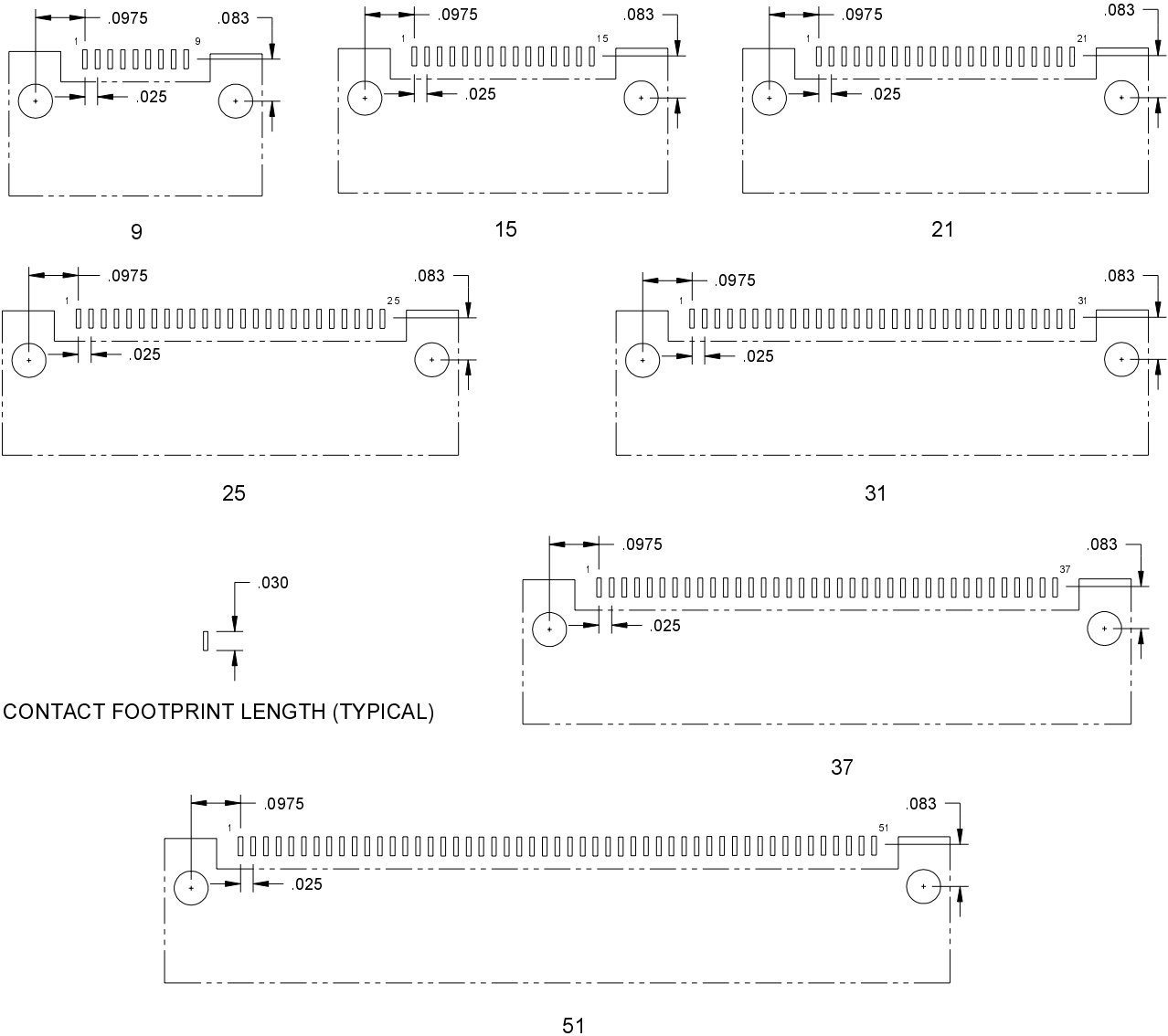
FOR OTHER TERMINATIONS, CONTACT CRISTEK.

<p>CRISTEK INTERCONNECTS, INC. www.cristek.com 1301 S. Lewis St. Anaheim, CA 92805 Phone: (714) 618-2000 FAX: (714) 535-4897</p>	<p>TITLE</p> <p><b>NANO METAL SHELL SINGLE ROW RIGHT ANGLE SURFACE MOUNT</b></p>	<p>DWG. NO.</p> <p><b>SRN1</b></p>	
	<p>FILENAME</p> <p><b>ADS-SRN1-2</b></p>	<p>CODE IDENT NO.</p> <p><b>67720</b></p>	<p>SHT <b>2</b> OF <b>4</b></p>
<p>TOLERANCE: .XXX ±.005 .XX ±.01 ANGLE ±1°</p>			



SRN1 PLUG PCB CONTACT FOOTPRINT (BOTTOM VIEW OF RECEPTACLE)

CRISTEK INTERCONNECTS, INC. www.cristek.com 1301 S. Lewis St. Anaheim, CA 92805 Phone: (714) 618-2000 FAX: (714) 535-4897	TITLE <b>NANO METAL SHELL                  SINGLE ROW RIGHT ANGLE                  SURFACE MOUNT</b>		DWG. NO. <b>SRN1</b>	
	FILENAME <b>ADS-SRN1-3</b>		CODE IDENT NO. <b>67720</b>	SHT <b>3</b> OF <b>4</b> REV <b>A</b>
	TOLERANCE: .XXX ±.005 .XX ±.01 ANGLE ±1°			



CONTACT FOOTPRINT LENGTH (TYPICAL)

SRN1 RECEPTACLE PCB CONTACT FOOTPRINT (BOTTOM VIEW OF PLUG)

CRISTEK INTERCONNECTS, INC. www.cristek.com 1301 S. Lewis St. Anaheim, CA 92805 Phone: (714) 618-2000 FAX: (714) 535-4897	TITLE	DWG. NO.		
	NANO METAL SHELL SINGLE ROW RIGHT ANGLE SURFACE MOUNT	SRN1		REV
		CODE IDENT NO. <b>67720</b>	SHT <b>4</b> OF <b>4</b>	<b>A</b>
FILENAME	ADS-SRN1-4	TOLERANCE: .XXX ±.005 .XX ±.01 ANGLE ±1°		