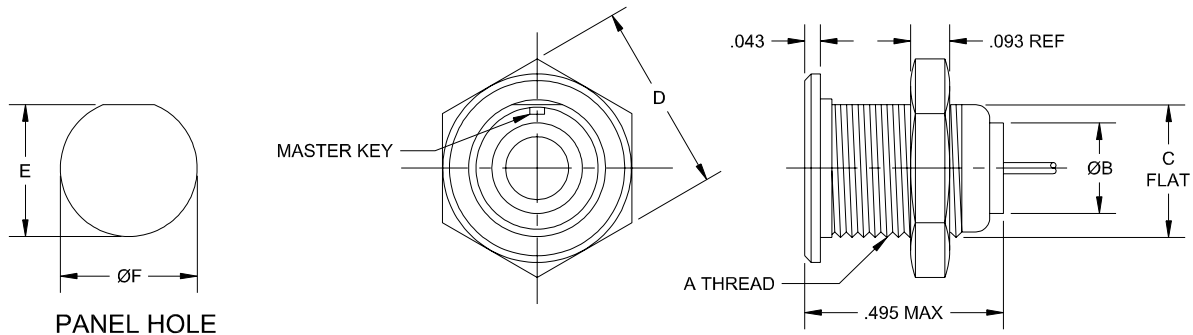


\* = MOST COMMONLY USED & STOCKED WIRE TYPE AND HARDWARE OPTIONS

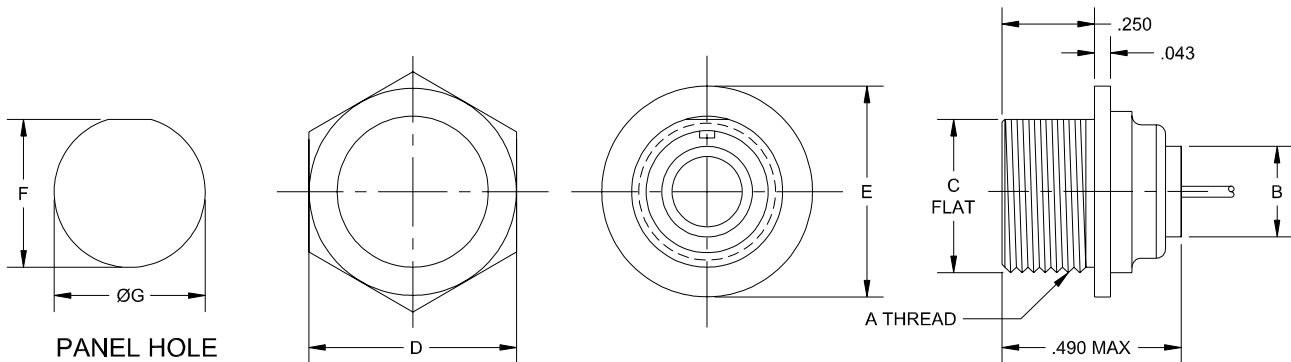
- 1. MATERIALS:
  - SHELL, COUPLING NUT, AND JAM NUT - BRASS OR STAINLESS STEEL
  - INSERT - REINFORCED THERMOPLASTIC, THERMOSET, OR EPOXY RESIN DIELECTRIC PLASTICS
  - PIN CONTACT - BERYLLIUM COPPER
  - SOCKET CONTACT - COPPER ALLOY
- 2. FINISH:
  - BRASS:
    - SHELL, COUPLING NUT, AND JAM NUT - ELECTROLESS NICKEL (PREFERRED), YELLOW CADMIUM OVER NICKEL, OR OLIVE CADMIUM OVER NICKEL
  - STAINLESS STEEL:
    - SHELL, COUPLING NUT, AND JAM NUT - PASSIVATION
    - CONTACTS - GOLD PLATE
- 3. SPECIFICATIONS:
  - CURRENT RATING ----- 3 AMPS MAX
  - TEMPERATURE RATING ----- -55° C TO +125° C
  - INSULATION RESISTANCE ----- 5000 MEGOHMS MIN
  - DWV AT SEA LEVEL ----- 600 VAC
  - DWV AT 70,000 FT ALTITUDE --- 150 VAC
  - CONTACT RESISTANCE ----- 8 MILLIOHMS MAX AT 2.5 AMPS
  - LOW LEVEL CONTACT ----- 10 MILLIOHMS MAX RESISTANCE
  - CONTACT RETENTION ----- 5 lb MINIMUM AXIAL LOAD
  - ENGAGEMENT FORCE ----- 6 oz MAX
  - SEPARATION FORCE ----- 0.5 oz MIN
- 4. ADDITIONAL INFORMATION:
  - DESIGN AND PERFORMANCE IN GENERAL ACCORDANCE WITH M83513
  - FOR OTHER TERMINATIONS, CONTACT CRISTEK.

CRISTEK INTERCONNECTS, INC. www.cristek.com 1301 S. Lewis St. Anaheim, CA 92805 Phone: (714) 618-2000 FAX: (714) 535-4897	TITLE <b>QUICK DISCONNECT CIRCULAR MICROMINIATURE METAL SHELL</b>	DWG. NO. <b>QDC</b>	
	FILENAME <b>ADS-QDC-1</b>	CODE IDENT NO. <b>67720</b>	SHT <b>1</b> OF <b>3</b>
TOLERANCE: .XXX ±.005 .XX ±.01 ANGLE ±1°			



SHELL SIZE	A THREAD UNEF-2A	ØB MAX	C MAX	D MAX	E	ØF
7	.375-32	.245	.359	.510	.364	.390
19	.500-28	.345	.470	.575	.475	.515
37	.750-20	.520	.740	.855	.740	.755

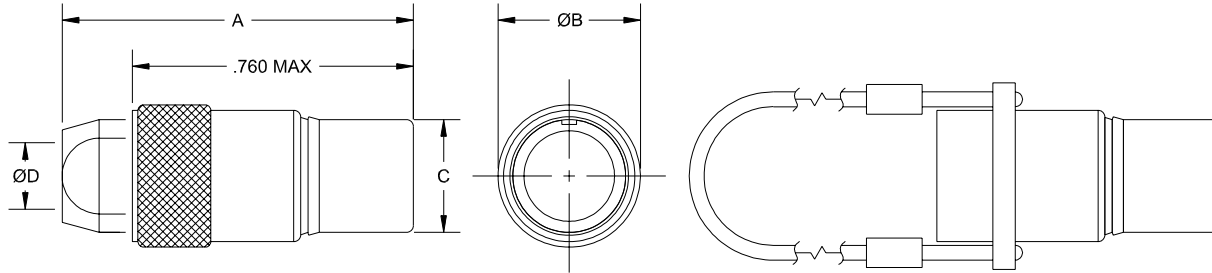
FRONT PANEL MOUNTING RECEPTACLE (TYPE F)



SHELL SIZE	A THREAD UNEF-2A	ØB MAX	C MAX	D MAX	ØE MAX	F	ØG
7	.4375-28	.245	.415	.500	.570	.425	.440
19	.5625-24	.345	.525	.625	.635	.535	.564
37	.750-20	.505	.730	.8125	.885	.740	.755

REAR PANEL MOUNTING RECEPTACLE (TYPE R)

CRISTEK INTERCONNECTS, INC. www.cristek.com 1301 S. Lewis St. Anaheim, CA 92805 Phone: (714) 618-2000 FAX: (714) 535-4897	TITLE <b>QUICK DISCONNECT CIRCULAR MICROMINIATURE METAL SHELL</b>		DWG. NO. <b>QDC</b>		
	FILENAME <b>ADS-QDC-2</b>		CODE IDENT NO. <b>67720</b>	SHT <b>2</b> OF <b>3</b>	REV <b>A</b>
	TOLERANCE: .XXX ±.005 .XX ±.01 ANGLE ±1°				



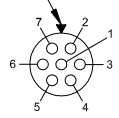
**SHELL W/ STD GRIP AND CABLE NUT**  
(RELEASE OPTION 1)

**SHELL W/ LANYARD GRIP**  
(RELEASE OPTION 2)  
[CONSULT FACTORY FOR DETAILED INFORMATION]

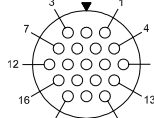
SHELL SIZE	A MAX	ØB MAX	ØC MAX	ØD MAX
7	.950	.385	.305	.180
19	.950	.515	.405	.260
37	1.200	.760	.635	.350

### PLUG (TYPE P)

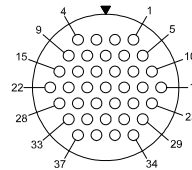
MASTER KEY (TYPICAL)



7 CONTACTS



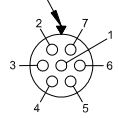
19 CONTACTS



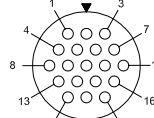
37 CONTACTS

### SOCKET INSERT MATING FACE (RECEPTACLE)

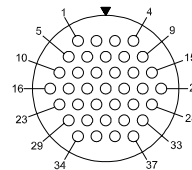
MASTER KEY (TYPICAL)



7 CONTACTS



19 CONTACTS



37 CONTACTS

### PIN INSERT MATING FACE (PLUG)

## CONTACT ARRANGEMENTS

CRISTEK INTERCONNECTS, INC. www.cristek.com 1301 S. Lewis St. Anaheim, CA 92805 Phone: (714) 618-2000 FAX: (714) 535-4897	TITLE	QUICK DISCONNECT CIRCULAR MICROMINIATURE METAL SHELL		
	FILENAME	ADS-QDC-3		
	DWG. NO.	QDC		
	CODE IDENT NO.	SHT	OF	REV
	67720	3	3	A
	TOLERANCE: .XXX ±.005 .XX ±.01 ANGLE ±1°			