

FD # - # # # # # # #

CRISTEK FILTERED
D-SUBMINIATURE CONNECTOR

LAYOUT

S = STANDARD (SIZE 20 CONTACT)
H = HIGH DENSITY (SIZE 22D CONTACT)

TYPE OF FILTER

C = C
P = Pi
L = L
T = T

FILTER CHARACTERISTICS

L = LOW RANGE
M = MID RANGE
T = STANDARD RANGE
H = HIGH RANGE
V = VERY HIGH RANGE
(SEE SHT 3 FOR ATTENUATION VALUES)

SHELL SIZE

1 = 9 PIN STD / 15 PIN HD
2 = 15 PIN STD / 26 PIN HD
3 = 25 PIN STD / 44 PIN HD
4 = 37 PIN STD / 62 PIN HD
5 = 50 PIN STD / 78 PIN HD
6 = 104 PIN HD

MODIFIER

0 - N/A
4 - #4-40 CLINCH NUT

TERMINATION

P = PC TAIL
S = SOLDER CUP
W = WIRE WRAP
(SEE SHT 1/2 FOR TERMINATION OPTIONS)

CONTACT TYPE

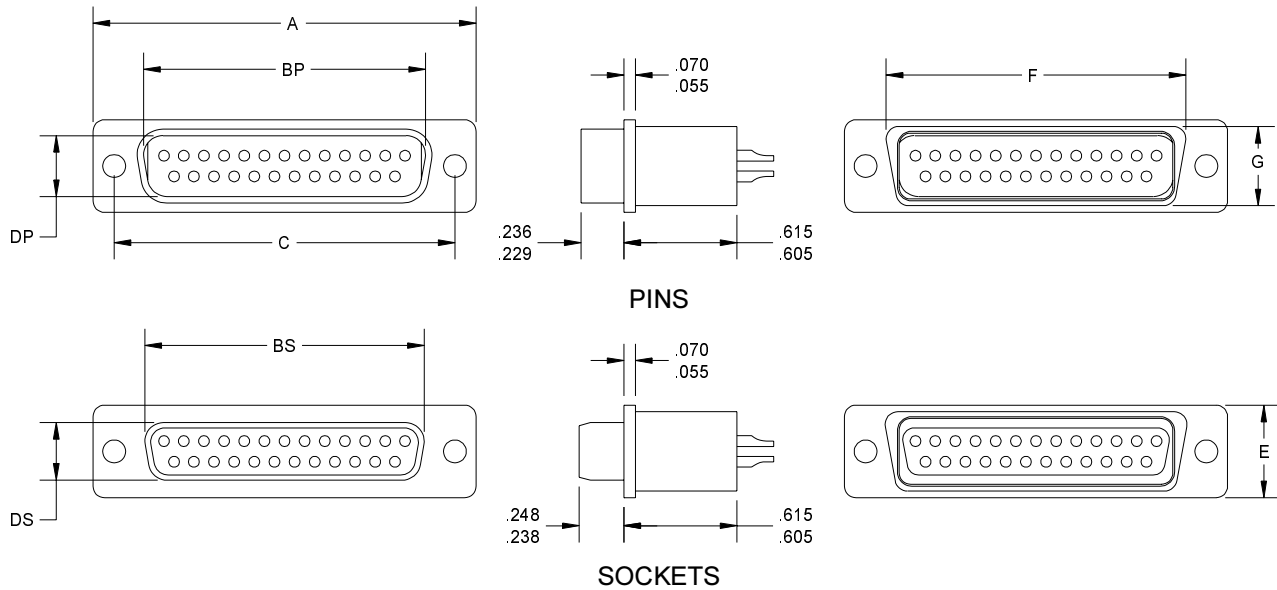
P = PIN
S = SOCKET

SHELL FINISH

A = BRIGHT CADMIUM OVER NICKEL PLATE
B = ELECTROLESS NICKEL (PREFERRED PLATING)
Y = YELLOW CHROMATE CADMIUM OVER NICKEL
O = OLIVE DRAB CADMIUM OVER NICKEL PLATE
T = BRIGHT TIN

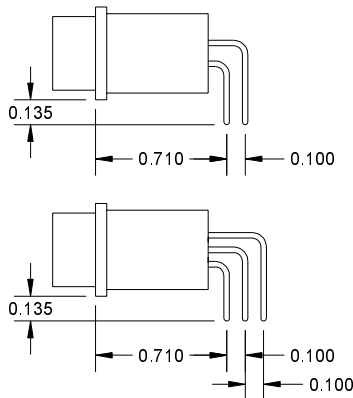
CRISTEK INTERCONNECTS, INC. www.cristek.com 1301 S. Lewis St. Anaheim, CA 92805 Phone: (714) 618-2000 FAX: (714) 535-4897	TITLE FILTERED D-SUBMINIATURE CONFORMING TO M24308, STANDARD AND HIGH DENSITY		DWG. NO. FDX	
	FILENAME ADS-FDX-1		CODE IDENT NO. 67720	SHT 1 OF 4 REV A
	TOLERANCE: .XXX ±.005 .XX ±.01 ANGLE ±1°			

6.4 FILTER CONNECTORS / M24308

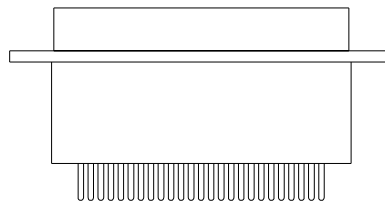


SHELL SIZE - (NO. OF PINS & TYPE)	A ±.015	BP	BS	C	DP ±.004	DS	E ±.015	F	G
1 - (9 STD / 15 HD)	1.213	.666	.643	.984	.330	.311	.494	.766	.427
2 - (15 STD / 26 HD)	1.141	.994	.971	1.312	.330	.311	.494	1.090	.427
3 - (25 STD / 44 HD)	2.088	1.534	1.511	1.852	.330	.311	.494	1.632	.427
4 - (37 STD / 62 HD)	2.729	2.182	2.159	2.500	.330	.311	.494	2.279	.427
5 - (50 STD / 78 HD)	2.635	2.079	2.064	2.406	.442	.423	.605	2.185	.539
6 - (104 HD)	2.729	2.212	2.189	2.500	.504	.486	.678	2.307	.601

BASIC SHELL DIMENSIONS



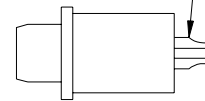
RIGHT ANGLE P.C.B. MOUNT



STRAIGHT P.C.B. MOUNT

SEE SHEET 3 FOR
P.C.B. HOLES PATTERNS

FOR TYPICAL TERMINATION DETAILS,
SEE THE FILT DWG IN THE FRONT OF
THIS SECTION.

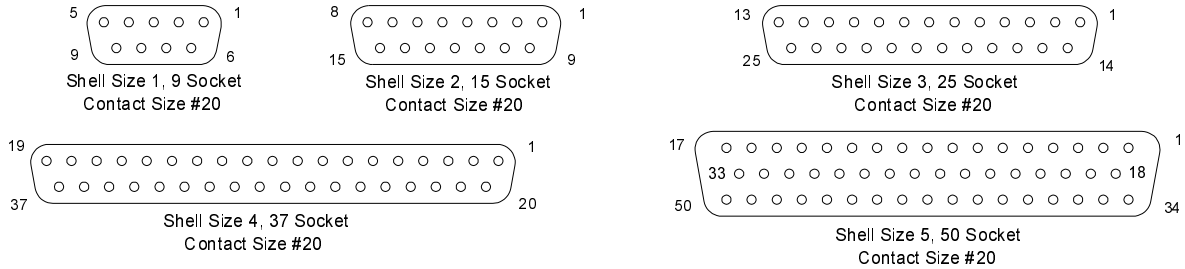


SOLDER CUP

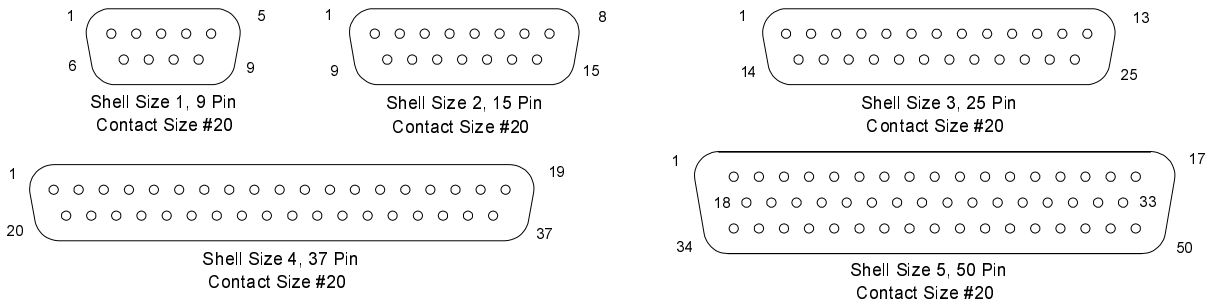
TERMINATIONS

CRISTEK INTERCONNECTS, INC. www.cristek.com 1301 S. Lewis St. Anaheim, CA 92805 Phone: (714) 618-2000 FAX: (714) 535-4897	TITLE	FILTERED D-SUBMINIATURE CONFORMING TO M24308, STANDARD AND HIGH DENSITY			DWG. NO.	FDX			
	FILENAME	ADS-FDX-2			CODE IDENT NO. 67720	SHT 2 OF 4	REV A		
	TOLERANCE: .XXX ±.005 .XX ±.01 ANGLE ±1°								

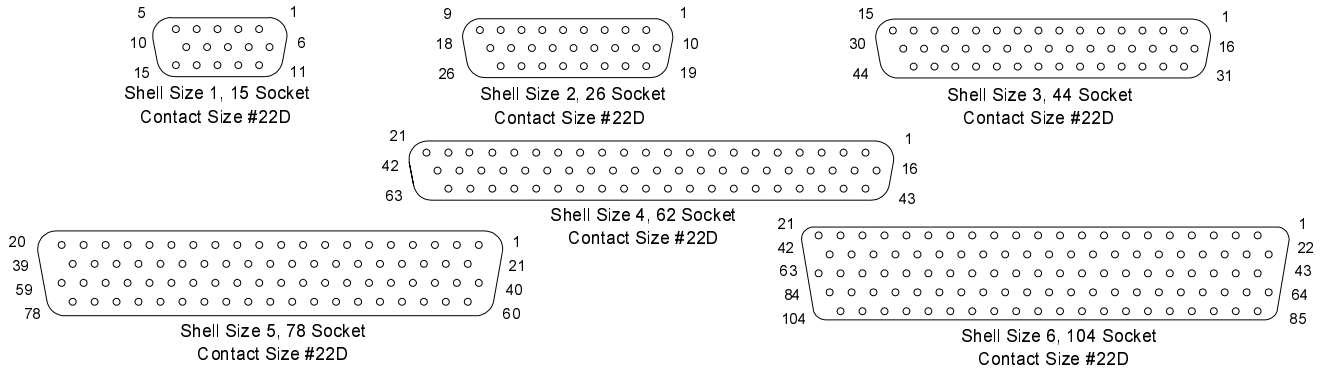
SOCKET INSERT MATING FACE (RECEPTACLE) FOR STD



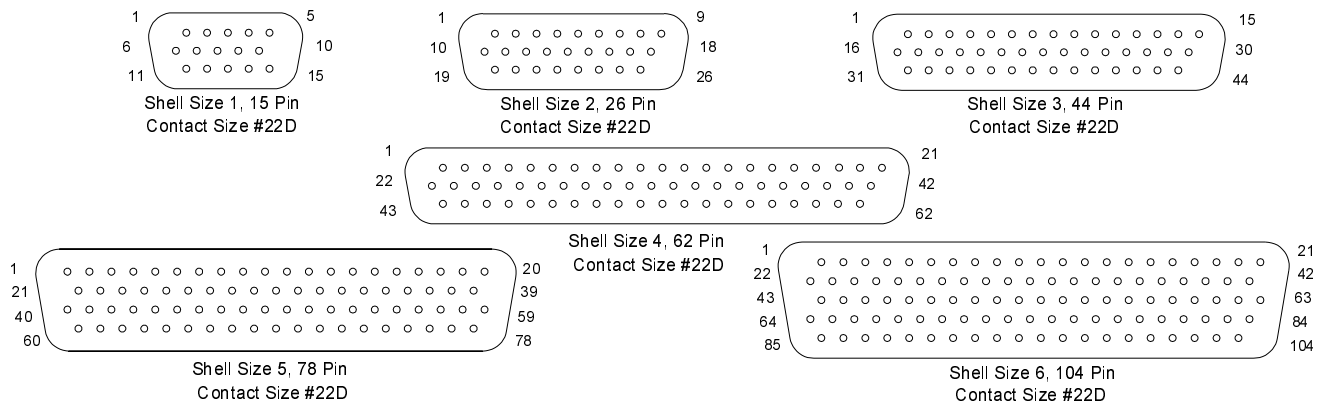
PIN INSERT MATING FACE (PLUG) FOR STD



SOCKET INSERT MATING FACE (RECEPTACLE) FOR HD

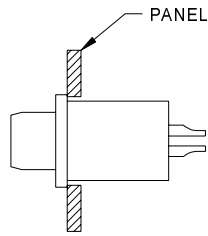


PIN INSERT MATING FACE (PLUG) FOR HD

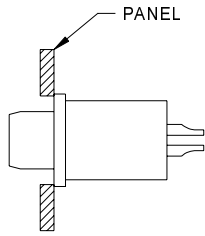
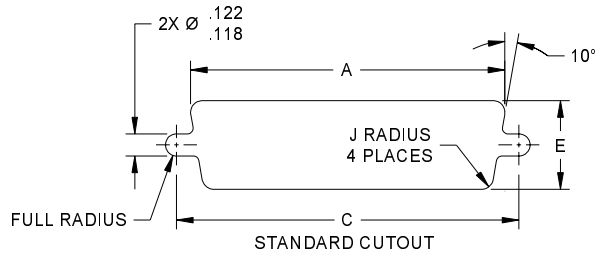


CRISTEK INTERCONNECTS, INC. www.cristek.com 1301 S. Lewis St. Anaheim, CA 92805 Phone: (714) 618-2000 FAX: (714) 535-4897	TITLE FILTERED D-SUBMINIATURE CONFORMING TO M24308, STANDARD AND HIGH DENSITY		DWG. NO. FDX	
	FILENAME ADS-FDX-3		CODE IDENT NO. 67720	SHT 3 OF 4 REV A
			TOLERANCE: .XXX ±.005 .XX ±.01 ANGLE ±1°	

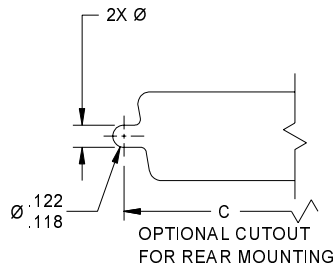
6.4 FILTER CONNECTORS / M24308



FRONT MOUNTING



REAR MOUNTING



SHELL SIZE - (NO. OF PINS & TYPE)	MOUNTING METHOD	A	C	E	J
1 - (9 STD / 15 HD)	FRONT	.833	.984	.485	.065
	REAR	.806	.984	.449	.132
2 - (15 STD / 26 HD)	FRONT	1.161	1.312	.485	.065
	REAR	1.134	1.312	.449	.132
3 - (25 STD / 44 HD)	FRONT	1.700	1.852	.485	.065
	REAR	1.674	1.852	.449	.132
4 - (37 STD / 62 HD)	FRONT	2.349	2.500	.485	.065
	REAR	2.326	2.500	.449	.132
5 - (50 STD / 78 HD)	FRONT	2.254	2.406	.593	.065
	REAR	2.218	2.406	.555	.132
6 - (104 HD)	FRONT	2.372	2.500	.655	.065
	REAR	2.250	2.500	.617	.132

MOUNTING METHODS

CRISTEK INTERCONNECTS, INC. www.cristek.com 1301 S. Lewis St. Anaheim, CA 92805 Phone: (714) 618-2000 FAX: (714) 535-4897	TITLE FILTERED D-SUBMINIATURE CONFORMING TO M24308, STANDARD AND HIGH DENSITY	DWG. NO. FDX		
	FILENAME ADS-FDX-4	CODE IDENT NO. 67720	SHT 4 OF 4	REV A
	TOLERANCE: .XX ± .005 .XX ± .01 ANGLE ± 1°			