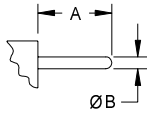
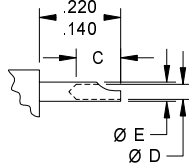


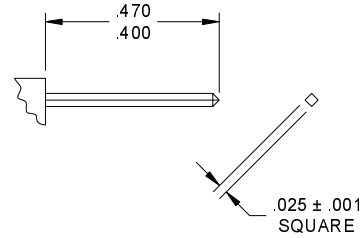
## 6.0 FILTER CONNECTORS



PCB TERMINATION



SOLDER CUP TERMINATION



WIRE WRAP TERMINATION

#12 CONTACTS				
A	ØB	C	ØD	ØE
.200/.120	.063/.059	.160/.130	.120/.112	.142/.134
#16 CONTACTS				
A	ØB	C	ØD	ØE
.200/.120	.042/.038	.160/.130	.080/.072	.104/.096
STANDARD DENSITY (#20 CONTACTS)				
A	ØB	C	ØD	ØE
.200/.120	.032/.028	.120/.090	.050/.042	.062/.057
HIGH DENSITY (#22 CONTACTS)				
A	ØB	C	ØD	ØE
.200/.120	.022/.018	.120/.090	.041/.035	.052/.047

### TERMINATION DIMENSIONS

1. MATERIALS:

SHELL AND JAM NUT - ALUMINUM ALLOY  
 INSERT - REINFORCED THERMOPLASTIC, THERMOSET, OR  
 EPOXY RESIN DIELECTRIC PLASTICS  
 O-RINGS, INTERFACIAL AND PERIPHERAL SEALS - SILICONE  
 BASED ELASTOMER  
 CONTACTS - COPPER ALLOY  
 GROUND SPRING - BERYLLIUM COPPER  
 INDUCTOR - FERRITE BEAD  
 CAPACITORS - CERAMIC PLANAR

2. FINISH:

SHELL AND JAM NUT - ELECTROLESS NICKEL (PREFERRED),  
 YELLOW CADMIUM OVER NICKEL, OR OLIVE DRAB CADMIUM  
 OVER NICKEL  
 CONTACTS - GOLD OVER NICKEL  
 GROUND SPRING - SILVER

3. SPECIFICATIONS:

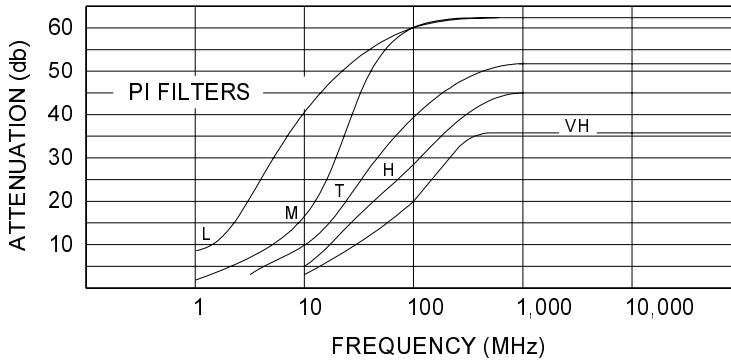
CURRENT RATING ..... 23 AMPS MAX / SIZE 12  
 CURRENT RATING ..... 13 AMPS MAX / SIZE 16  
 CURRENT RATING ..... 7.5 AMPS MAX / SIZE 20  
 CURRENT RATING ..... 5 AMPS MAX SIZE / 22  
 TEMPERATURE RATING ..... -55° C TO +125° C  
 INSULATION RESISTANCE ..... 5000 MEGOHMS MIN  
 DWV AT SEA LEVEL ..... 500 VDC

CRISTEK INTERCONNECTS, INC. www.cristek.com 1301 S. Lewis St. Anaheim, CA 92805 Phone: (714) 618-2000 FAX: (714) 535-4897	TITLE <b>FILTERED CONNECTOR                  TYPICAL PERFORMANCE, MATERIAL,                  AND TERMINATION INFORMATION</b>	DWG. NO. <b>FILT</b>		
	FILENAME <b>ADS-FILT-1</b>	CODE IDENT NO. <b>67720</b>	SHT <b>1</b> OF <b>2</b>	REV <b>A</b>
TOLERANCE: .XXX ± .005 .XX ± .01 ANGLE ± 1°				

### "PI" TYPE FILTERS



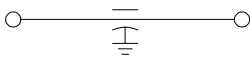
"PI" TYPE FILTERS PROVIDE A STEEPER ROLLOFF AND GIVE A MAXIMUM AMOUNT OF FILTERING.



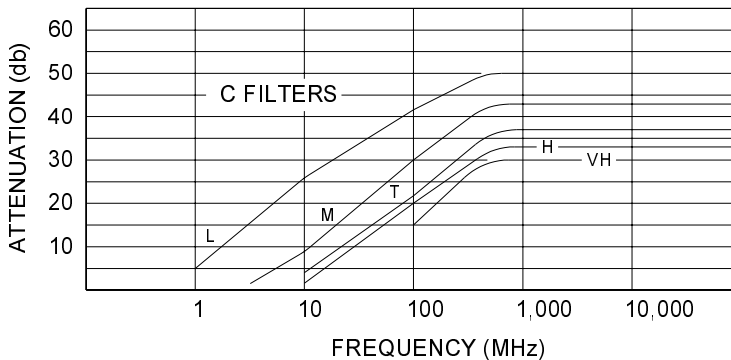
FILTER CHARACTERISTICS		L	M	T	H	VH
CAPACITANCE IN PICO FARADS AT 1KHz, .1 VRMS		16,000 22,500	4,000 6,000	1,650 2,500	425 650	200 300
ATTENUATION MINIMUMS PER MIL-STD-220 AT 25° C WITHOUT BIAS VOLTAGE OR CURRENT	FREQ. MHz					
	1	8	2	-	-	-
	5	20	10	3	-	-
	10	40	16	9	5	3
	100	60	60	40	28	20
	500-1000	62	62	52	45	36

### PI - TYPE FILTER

### "C" TYPE FILTERS



"C" TYPE FILTERS PROVIDE A MODERATE AMOUNT OF FILTERING YET TAKE THE LEAST AMOUNT OF SPACE AND USUALLY ARE THE LOWEST IN COST



FILTER CHARACTERISTICS		L	M	T	H	VH
CAPACITANCE IN PICO FARADS AT 1KHz, .1 VRMS		16,000 22,500	4,000 6,000	1,650 2,500	425 650	200 300
ATTENUATION MINIMUMS PER MIL-STD-220 AT 25° C WITHOUT BIAS VOLTAGE OR CURRENT	FREQ. MHz					
	1	5	-	-	-	-
	5	15	2	-	-	-
	10	26	8	4	2	-
	100	42	30	22	20	15
	500-1000	50	43	37	33	30

### C - TYPE FILTER

### ATTENUATION VALUES

CRISTEK INTERCONNECTS, INC. www.cristek.com 1301 S. Lewis St. Anaheim, CA 92805 Phone: (714) 618-2000 FAX: (714) 535-4897	TITLE	FILTERED CONNECTOR TYPICAL PERFORMANCE, MATERIAL, AND TERMINATION INFORMATION		DWG. NO.	FILTER	
	FILENAME	ADS-FILT-A2		CODE IDENT NO. 67720	SHT 2 OF 2	REV A
				TOLERANCE: .XXX ±005 .XX ±01 ANGLE ±1°		